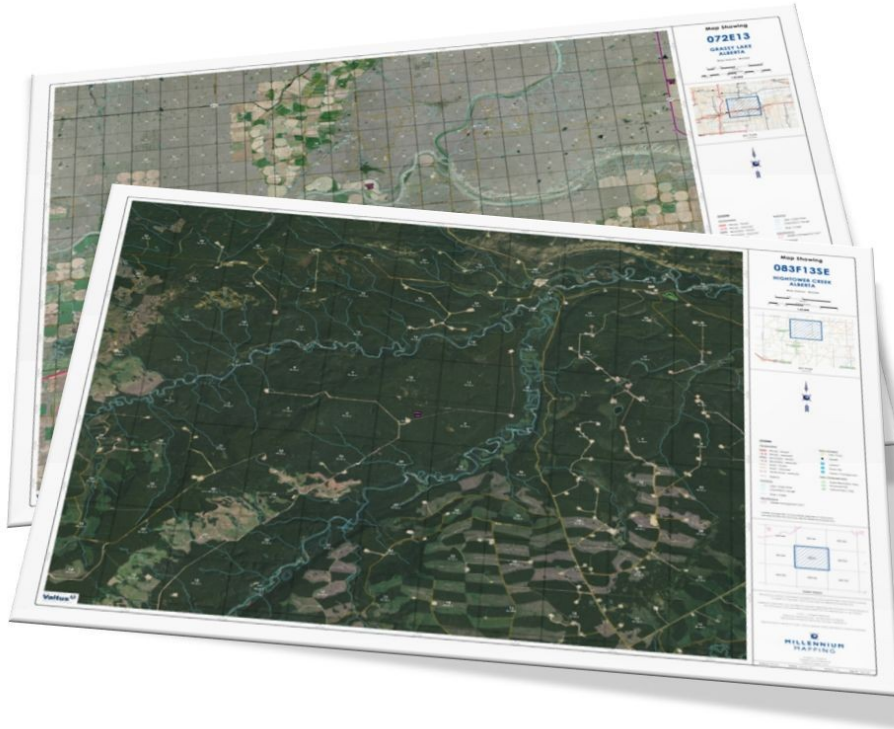




# MILLENNIUM MAPPING

**Our interactive ordering system with complete product descriptions  
and samples will be online soon.**

For more information or to order mapping products contact us by email or phone.  
Email: [maps@millgeo.com](mailto:maps@millgeo.com) Phone: 403.270.9575



## ALBERTA-WIDE COVERAGE

Up-to-date Maps for:

- Hunting
- Fishing
- Hiking
- Camping
- Horseback Riding
- Mountain Biking
- Off-Roading
- Snowmobiling
- Geocaching
- X-Country Skiing

### Product Description

Our 36x26 recreational maps are currently available for Alberta in two standard scales based on the National Topographic System of Canada. All maps are plotted on durable, water-resistant paper and include the following information:

- High resolution aerial photography  
\* where available ( ~80% Alberta coverage)
- Roads, trails, railways, major transmission lines
- Populated places
- Rivers, creeks, lakes
- Various parks, reserves, and boundaries
- Wildlife Management Units
- UTM grids for GPS reference

### Recreational Mapping Series

**REC25K** 1:25,000 Map

#### **MORE DETAIL**

#### **LESS LAND COVERAGE**

Provides a high level of detail for your Specific area of interest.

**\$45.00** + GST & Shipping \*\*

**REC50K** 1:50,000 Map

#### **MORE LAND COVERAGE**

#### **LESS DETAIL**

Provides a wider coverage area with slightly less detail.

**\$65.00** + GST & Shipping \*\*

**\*\* Special introductory pricing. Subject to change in 2012.**